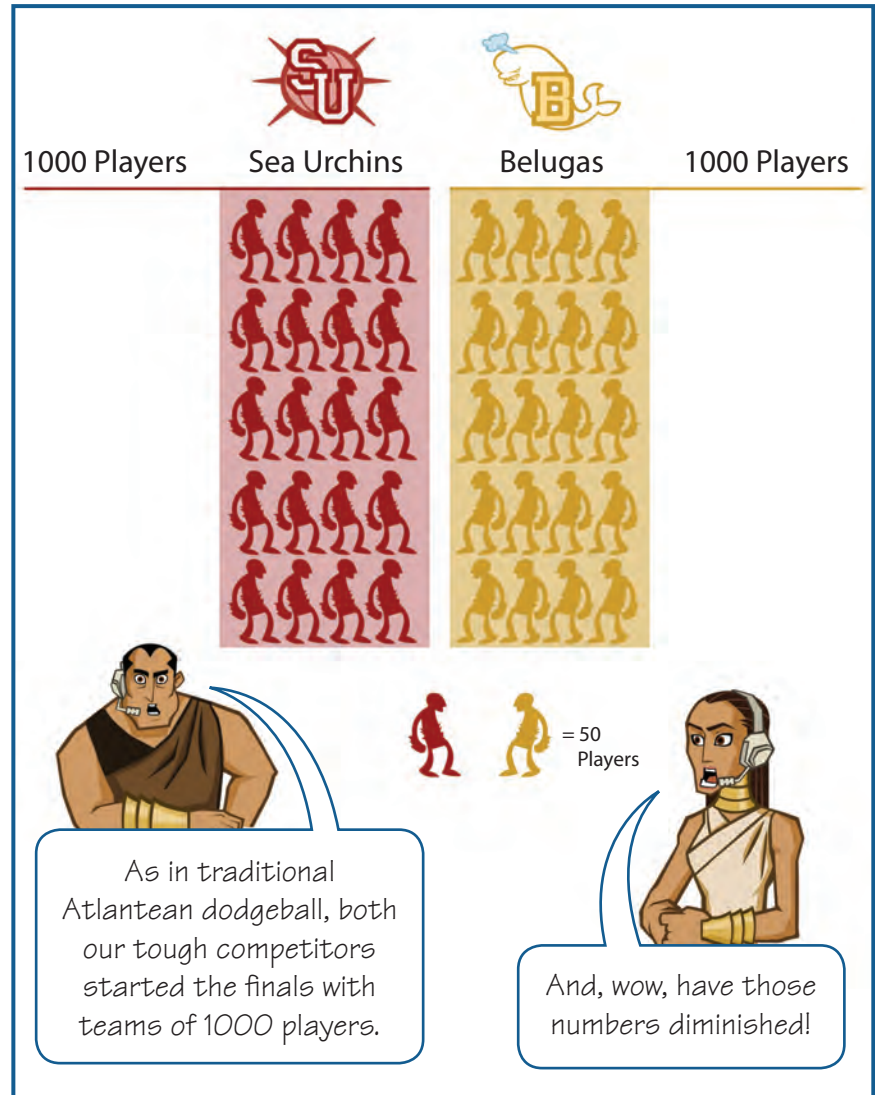
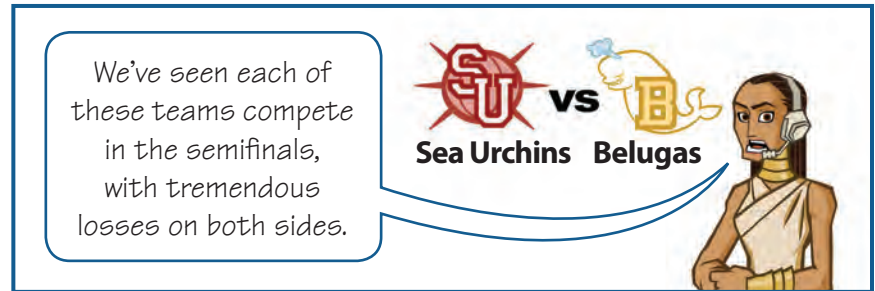


Fold Here



The semifinals were harsh for the Sea Urchins;

1000 Players

500 Players Lost

= 50 Players

they lost a part of their whole team, 500 players.

And in Atlantean dodgeball, when you lose a member ...

they're out for the season.

Speaking of losses, the Belugas didn't fare much better. Their whole team lost almost the same part: 520 players.

1000 Players

520 Players Lost

= 50 Players

1000 Players 1000 Players

500 Players Left 480 Players Left

or = 50 Players

But let's compare the parts of each team that are left.

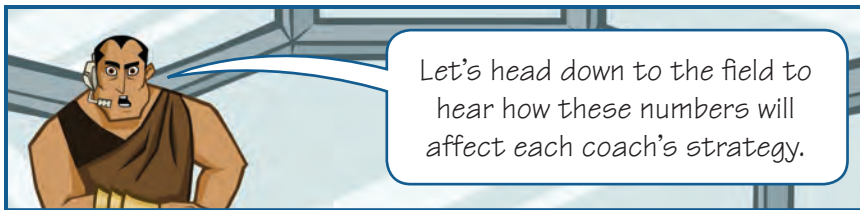
After losses, the teams will start today's game with about half their players.

or = 50 Players

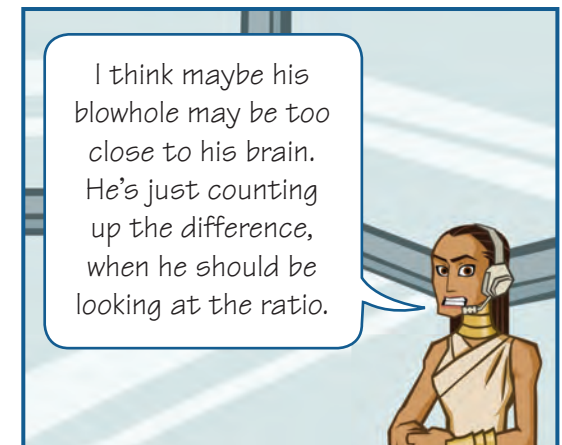
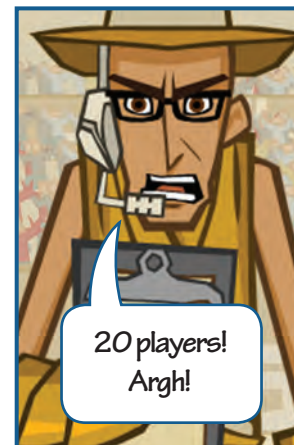
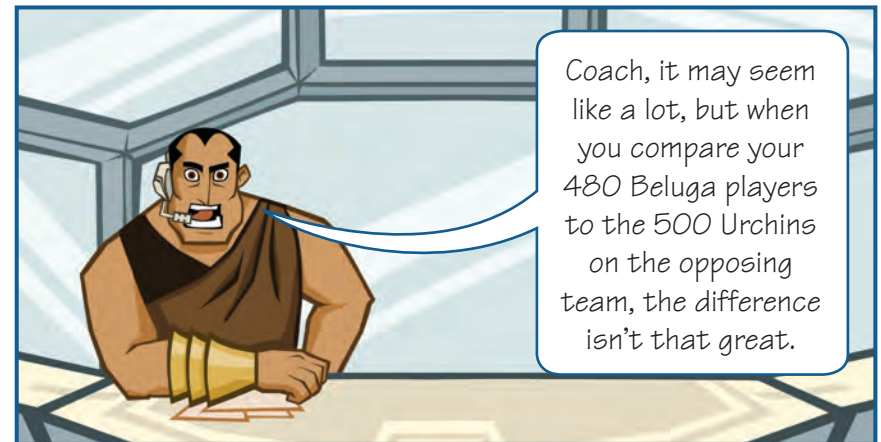
$\frac{1}{2}$ = $\frac{1}{2}$

1 = 1

Fold Here



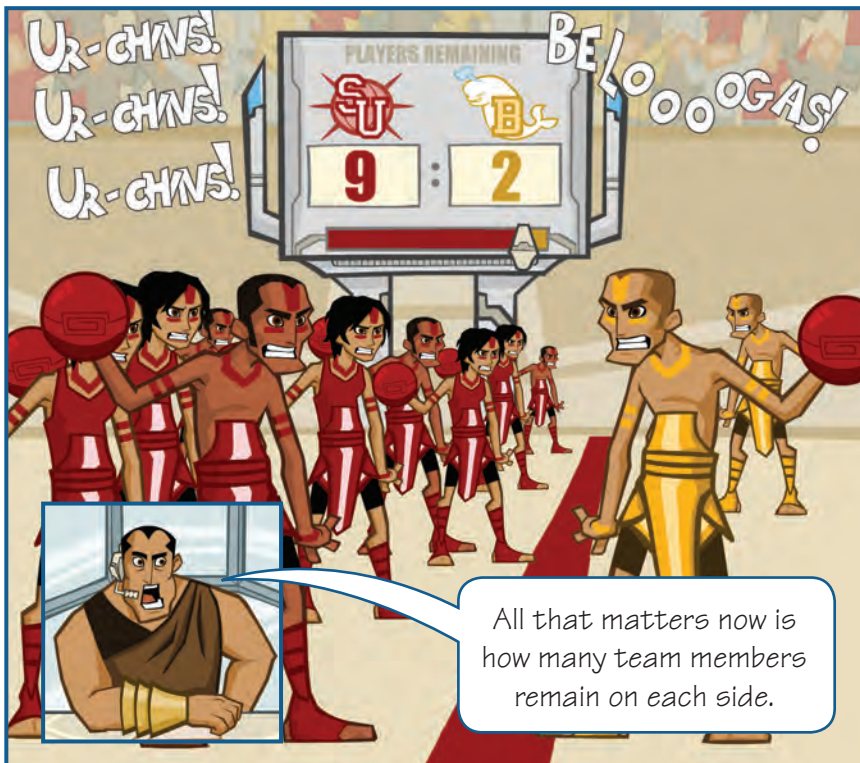
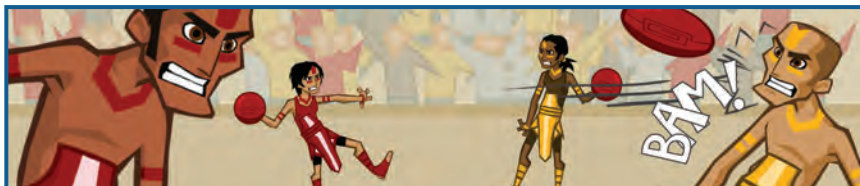
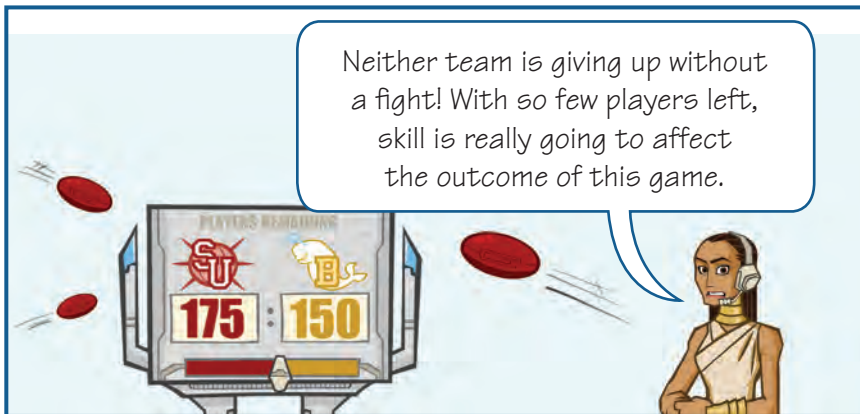
Fold Here



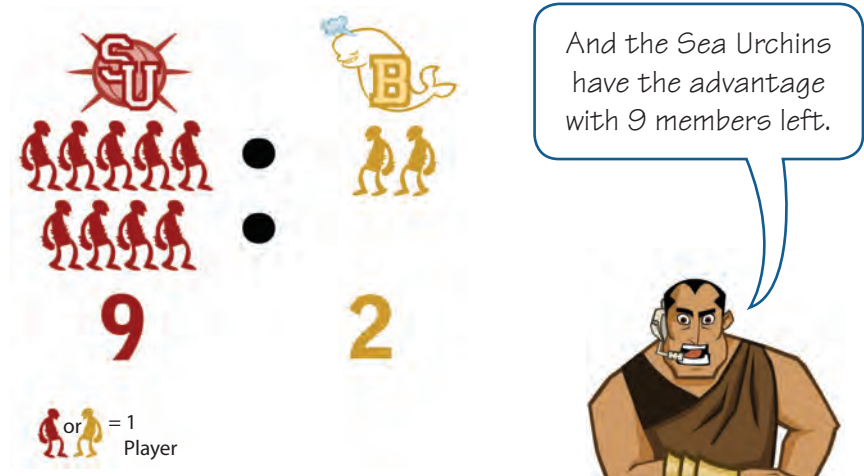


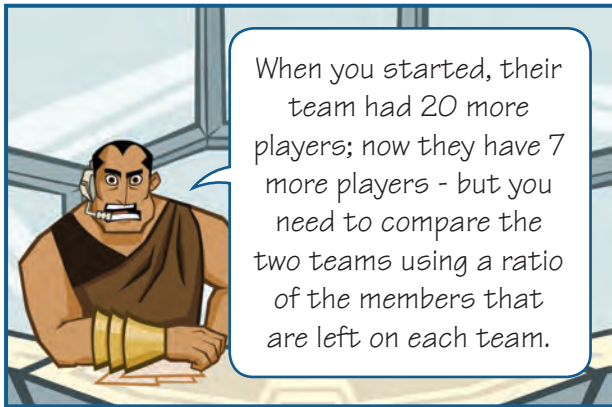
Fold Here





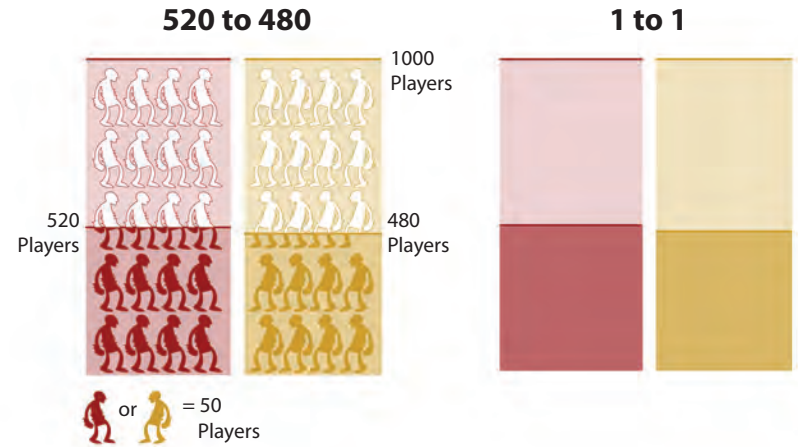
Fold Here



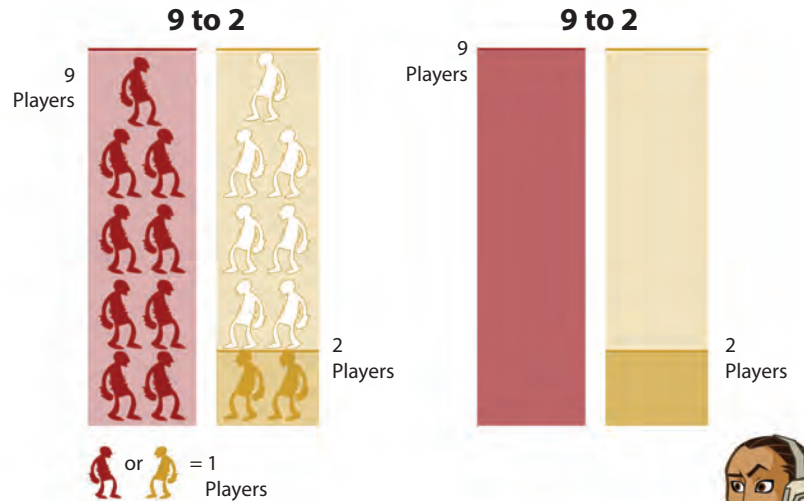


Fold Here

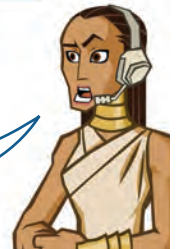
We started this game with an Urchin:Beluga ratio of about **1:1**.

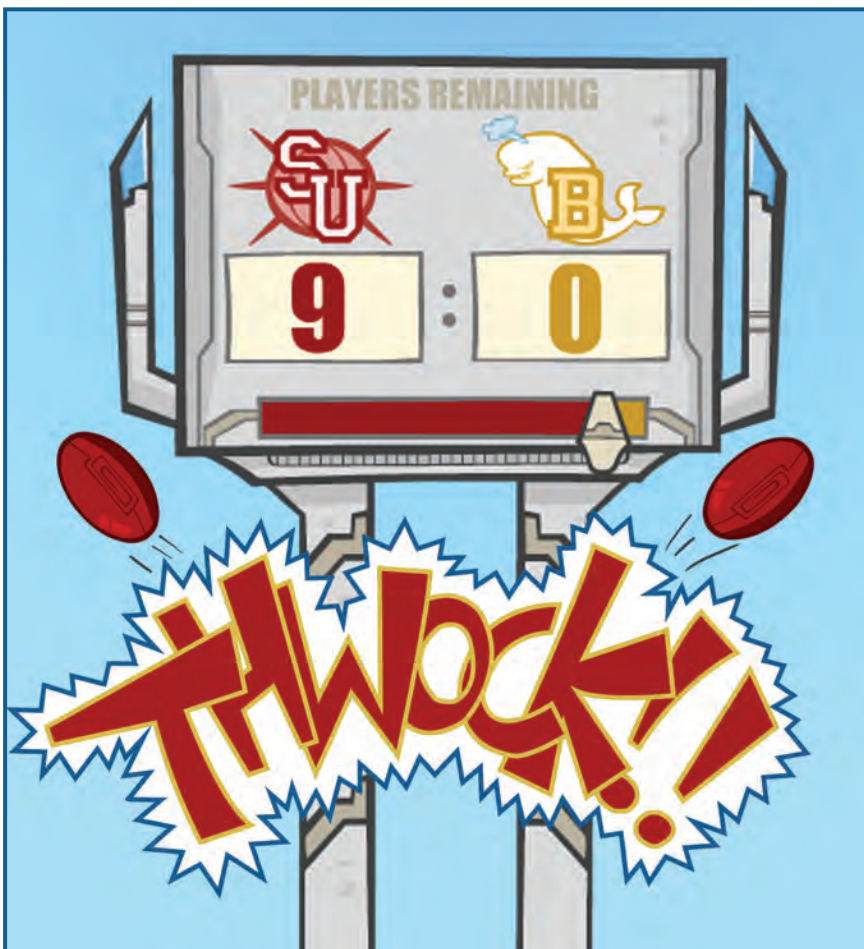


The ratio is now a staggering **9:2**.

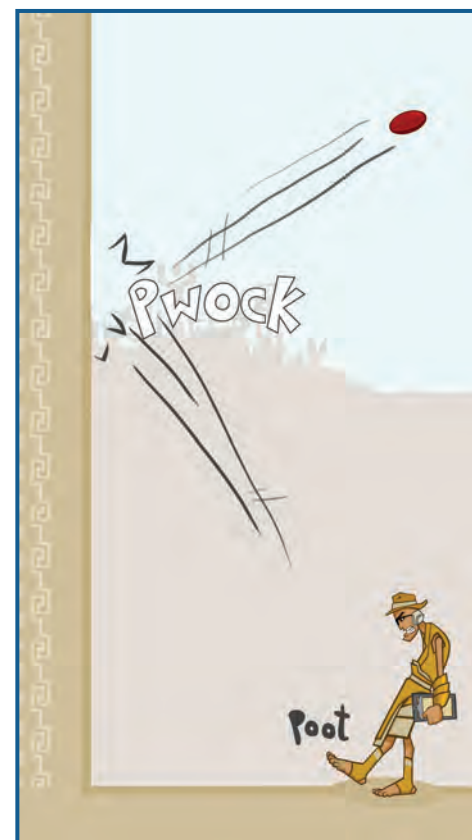


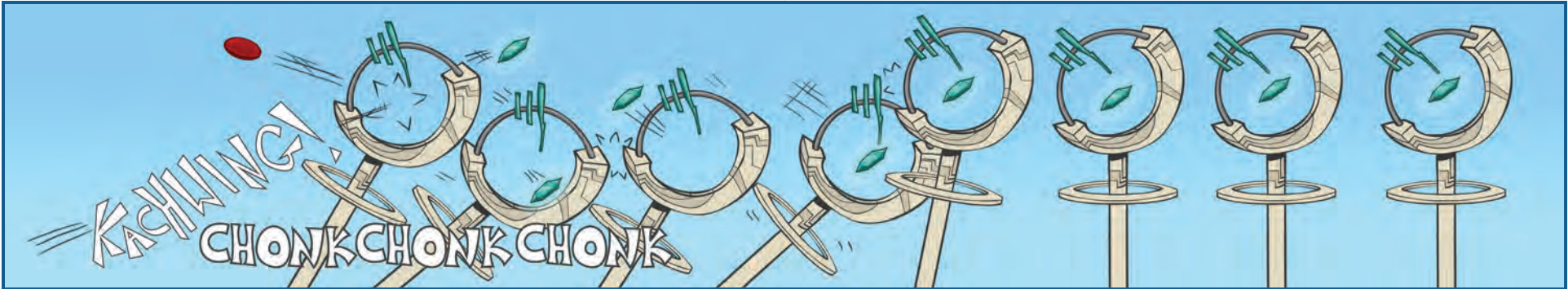
No one can argue any longer that these teams are evenly matched.

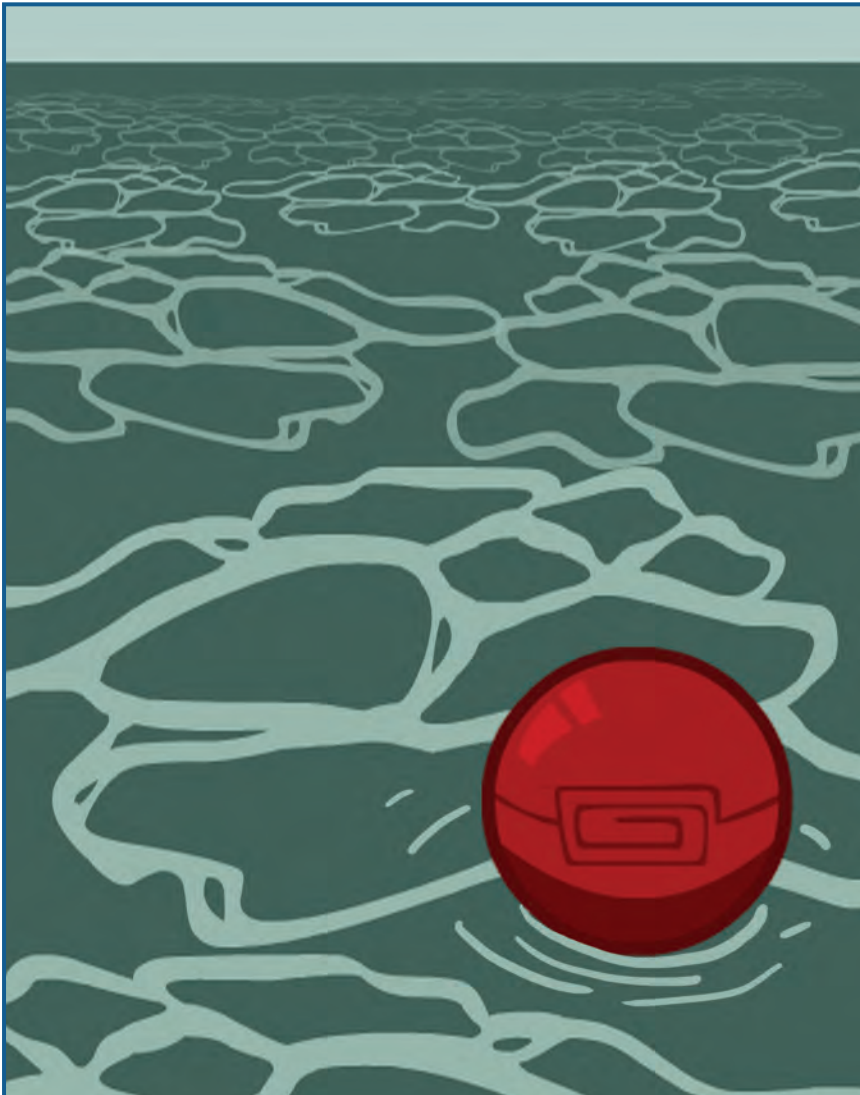
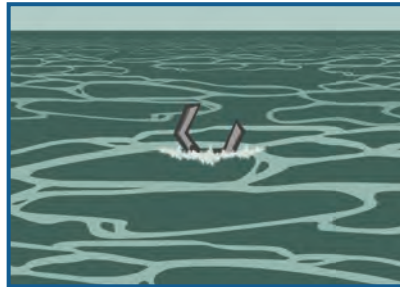
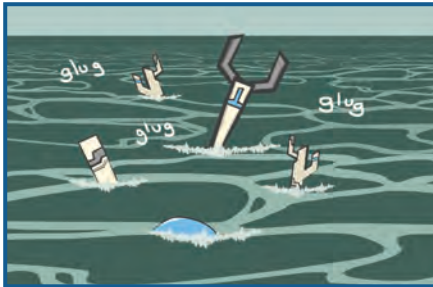




Fold Here







Fold Here



... And thus concludes one more of my famous accounts of the lost city Atlantis.



Ugh. It feels like I've been listening to this story for four score and seven years.

I wish to hear of this Atlantis nevermore.

Oh, ooh ooh, Have I told you the totally true story of the great Atlantean spelling bee showdown?

GROAN